

SQL Server 2005 Installation Guide

Revised September 25th, 2006

Copyright 2006 ImproMed, Inc. All rights reserved. No part of this publication may be reproduced, transmitted, transcribed, stored in a retrieval system, or translated into any language or computer language, in any form or by any means without the prior written permission of ImproMed, Inc.

Intentionally Left Blank

Table of Contents:

<i>Introduction</i>	5
ImproMed Advises You to Proceed With Caution!	5
If You Need More Help	5
<i>Installing Internet Information Services (IIS)</i>	7
<i>Installing Microsoft© SQL Server 2005</i>	9
<i>Installing Microsoft© SQL Server 2005 Workstation Only</i>	29

Intentionally Left Blank

Introduction

ImproMed, Inc. has created this instruction manual to assist you with loading the Microsoft© SQL Server 2005 product. In this document, we detail the steps necessary for Microsoft© SQL Server 2005 to be implemented in your practice. You may also need your Windows XP install CD.

ImproMed Advises You to Proceed With Caution!

Before loading this version of SQL Server, you must verify that your ImproMed Infinity Programs are version 4.0.562 SR6 or higher. Earlier versions of Infinity may have compatibility issues with the changes Microsoft© has made to their SQL Server product.

You can verify that you are on the correct version from the Infinity desktop by clicking **Help | About**. The Infinity version number will be listed.

It must be clearly understood that this is a *Microsoft©* product installation and not an ImproMed product installation. As a Microsoft© Certified Gold Partner, ImproMed has the rights to distribute certain Microsoft© products at a reduced cost to its customers. This distribution of SQL Server falls into this category.

Microsoft© SQL Server 2005, once installed, becomes an integrated component of the Microsoft© operating system. Because of this close integration there exists the possibility of conflicts and the need to troubleshoot and repair certain aspects of the operating system. These potential issues are noted here in an effort to inform you, the consumer, of possible problems that could extend the time required to implement this version of Microsoft© SQL Server 2005.

Fortunately, most SQL Server 2005 installations will be clean installs on newly configured servers, which are unlikely to experience any of these potential difficulties, and it is not anticipated that many Infinity users will be making the transition from SQL 2000 to SQL 2005.

With than in mind, please proceed through the following installation instructions to load Microsoft's© SQL Server 2005 product.


If You Need More Help

If, after having read this entire set of instructions, you have any questions about the risks associated with this installation, please contact ImproMed at 800-925-7171. We would be happy to answer any questions you may have.

Please be aware, however, that this is NOT an ImproMed, Inc. product. If your install does not complete correctly, or if your server fails to function correctly once the product is installed, you will need to contact Microsoft© for assistance.

Intentionally Left Blank

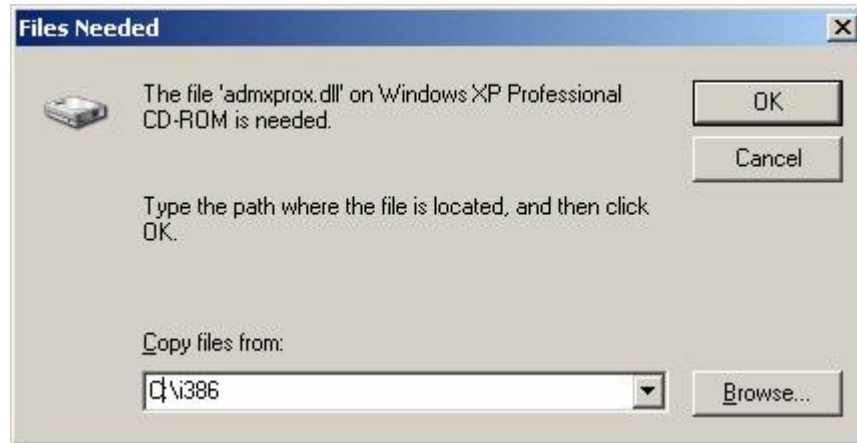
Installing Internet Information Services (IIS)

1. Click **Start | Control Panel**.
2. Double-click **Add or Remove Programs**.
3. Click **Add/Remove Windows Components**.
4. If *Internet Information Services (IIS)* is checked, click **Cancel**, then click  and proceed to the *Installing Microsoft® SQL Server 2005* portion of this guide. Otherwise, continue to step 5.
5. Place a check next to *Internet Information Services (IIS)*.



6. Click **Next**.

7. You may be asked for your Windows XP CD-Rom. If this occurs, place the CD in your CD-Rom drive and click OK. If the computer cannot locate the necessary files, you may have to type Z:\i386 (Note: Z is the default letter for the CD-Rom drive, your system settings may be different.) or C:\i386 if the XP CD has already been copied your hard drive (Note: C is the default letter for your hard drive.), then click **OK**.



8. Click **Finish**.
9. Click  to close the screen.
10. Reboot the server.
11. Proceed to the *Installing Microsoft® SQL Server 2005* portion of this guide.

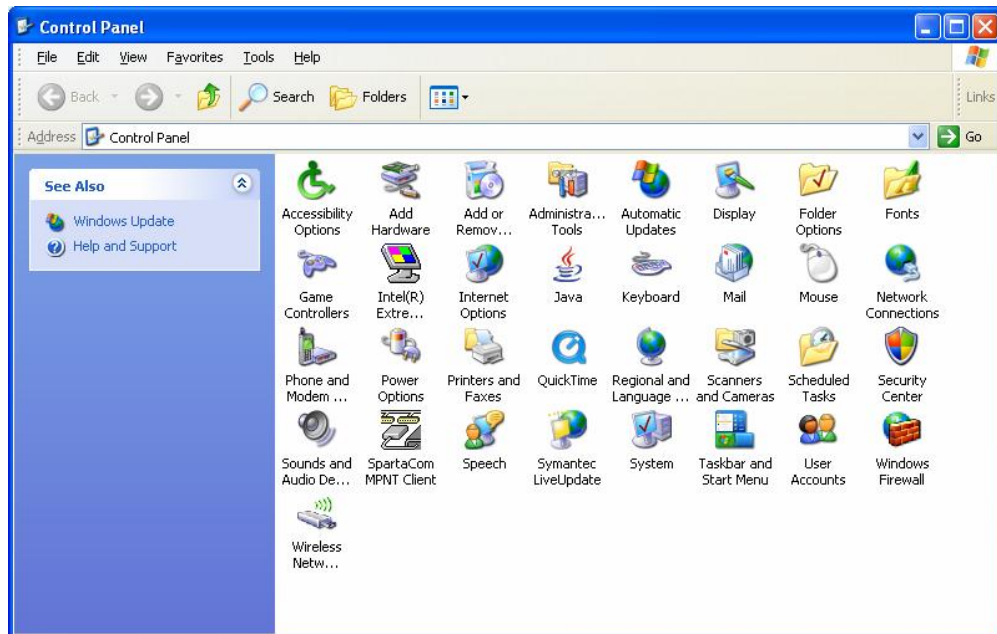
Installing Microsoft© SQL Server 2005

The following instructions assume that you currently have **Microsoft© SQL Server 2000** installed on your server. If this is not the case, skip to step 8.

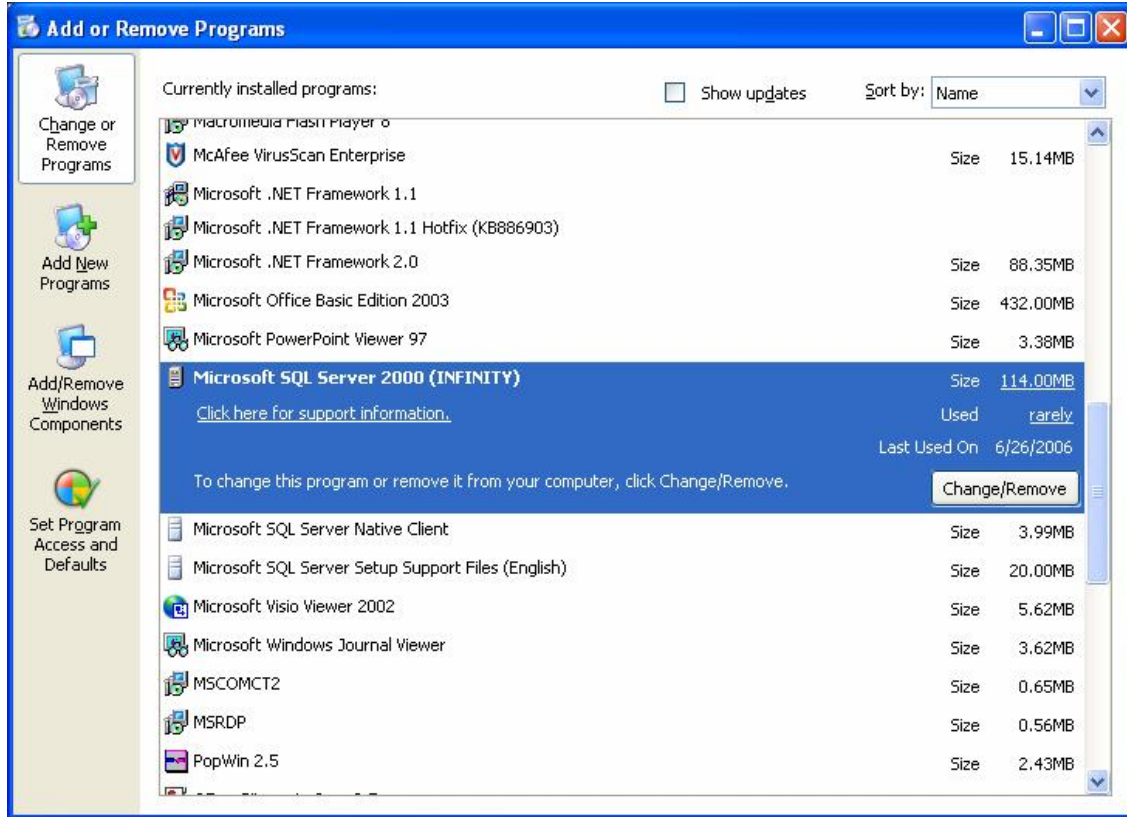
1. Click **Start | Control Panel**.



2. Double-click **Add or Remove Programs**.



3. Click **Microsoft SQL Server 2000**, then click **Change/Remove**.



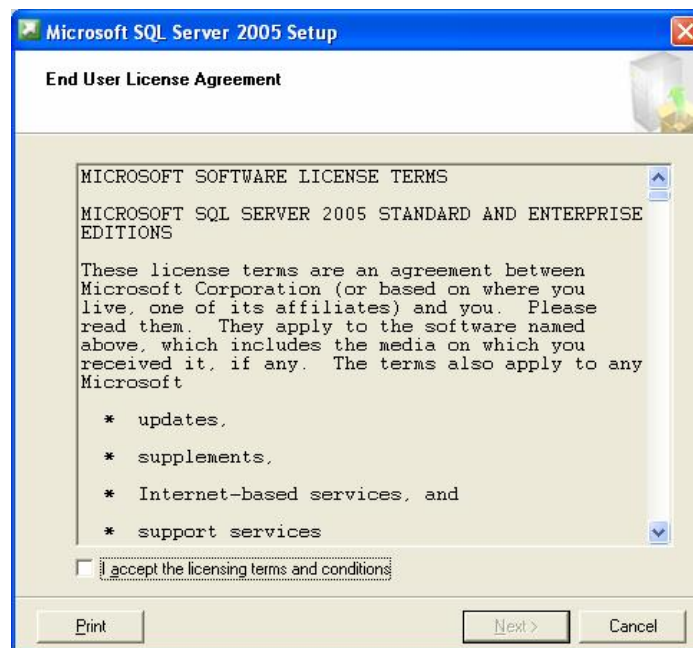
4. When you are asked if you are sure, click **Yes**.
5. If you are asked to remove unused files, choose **No to All**.
6. Once the uninstall process is complete, click **OK**.



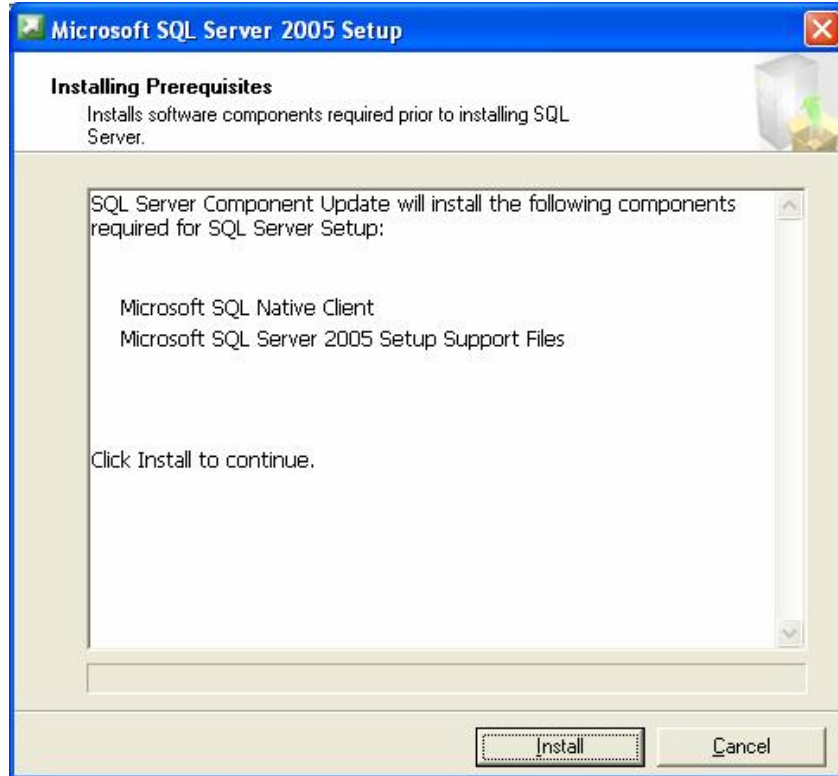
7. Reboot your server.
8. Insert Disc 1. The CD will automatically open the menu displayed below:



9. Click on **Server components, tools, Books Online, and Samples**.
10. Place a check next to **I accept the licensing terms and conditions**. Then click **OK**.



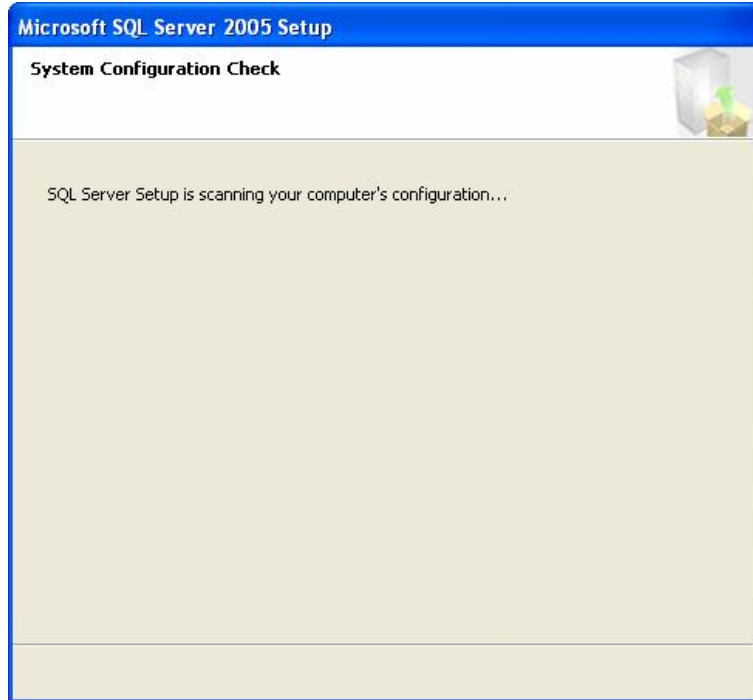
11. Click **Install**.



12. After the install has completed click **Next**.



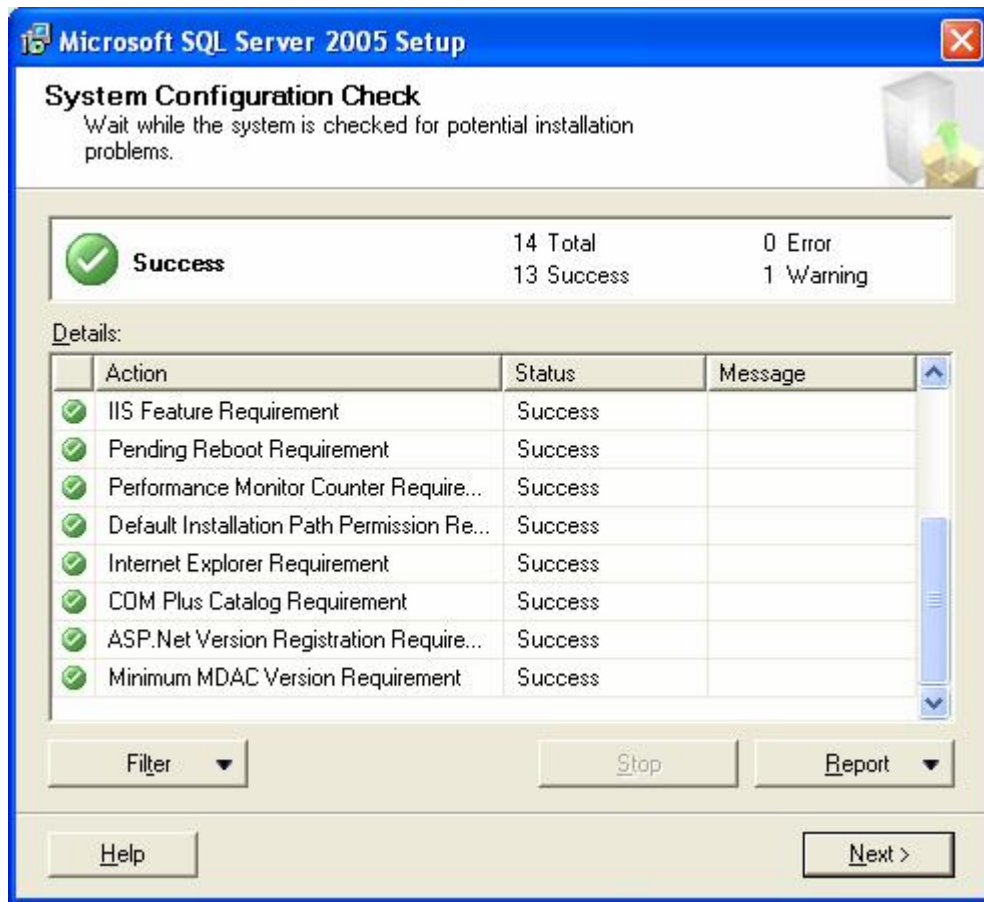
13. The setup will then perform a *System Configuration Check*:



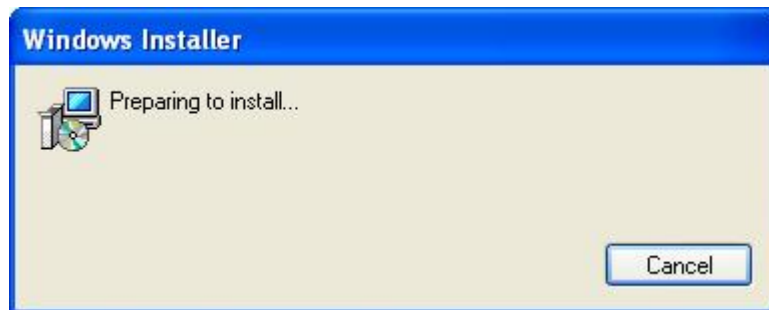
14. You will be welcomed to the Microsoft© SQL Server Installation Wizard. Click **Next**.



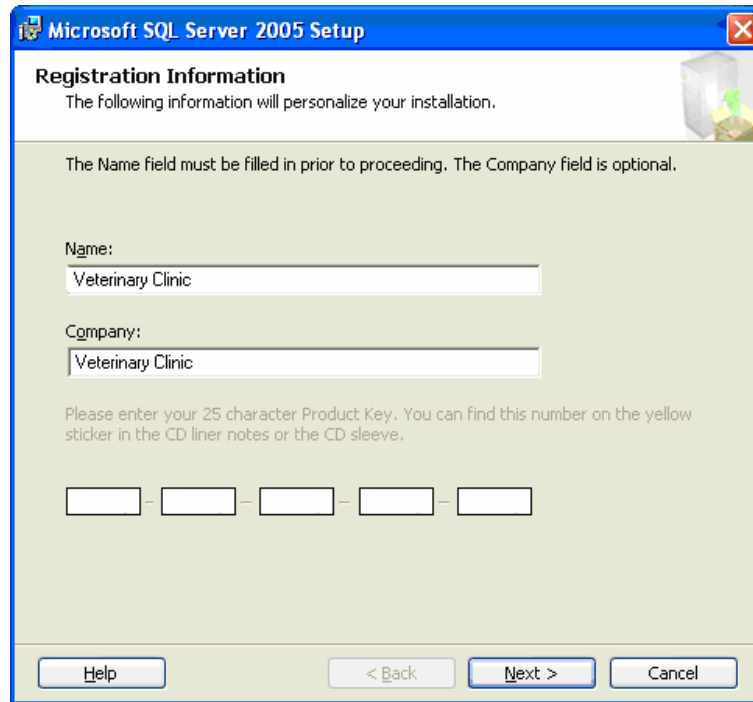
15. A *System Configuration Check* will be performed. **Make a note of any warnings or errors you receive.** They may become important later.
16. Click **Next**.



17. The *Windows Installer* will proceed with the installation of SQL Server 2005.



18. Fill in the *Registration Information*, then click **Next**. The license number will most likely already be filled in, and grayed out.



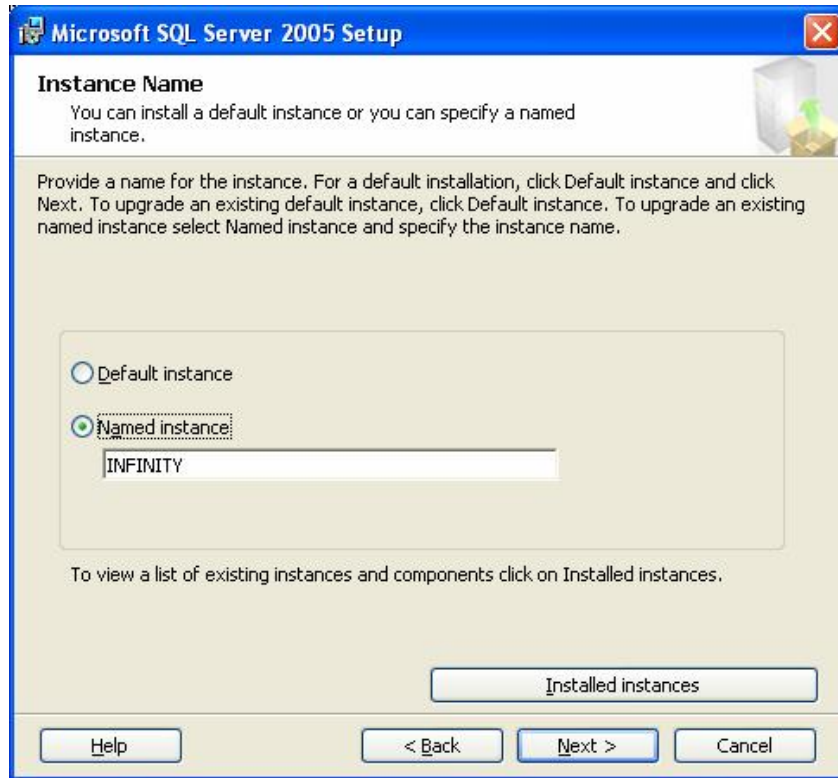
The screenshot shows the "Registration Information" dialog box in the Microsoft SQL Server 2005 Setup wizard. The title bar reads "Microsoft SQL Server 2005 Setup". The main heading is "Registration Information" with a sub-heading "The following information will personalize your installation." Below this, a note states: "The Name field must be filled in prior to proceeding. The Company field is optional." There are two text input fields: "Name:" containing "Veterinary Clinic" and "Company:" containing "Veterinary Clinic". Below these is a section for a "25 character Product Key" with instructions to find it on a CD sticker, followed by five empty input boxes separated by dashes. At the bottom, there are buttons for "Help", "< Back", "Next >", and "Cancel".

19. Place a checkmark in the items that are checked below. If Reporting Services is unchecked and grayed out, IIS is not loaded (See the Installing IIS section of this document):

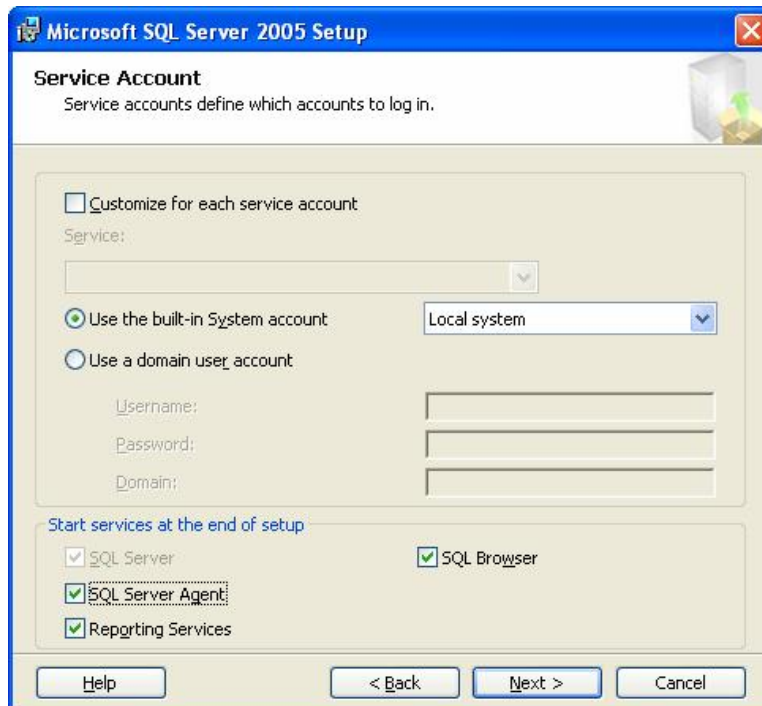


The screenshot shows the "Components to Install" dialog box in the Microsoft SQL Server 2005 Setup wizard. The title bar reads "Microsoft SQL Server 2005 Setup". The main heading is "Components to Install" with a sub-heading "Select the components to install or upgrade." Below this, there is a list of components with checkboxes: "SQL Server Database Services" (checked), "Analysis Services" (unchecked), "Reporting Services" (checked), "Notification Services" (unchecked), "Integration Services" (unchecked), and "Workstation components, Books Online and development tools" (checked). There are also sub-options for "Create a SQL Server failover cluster" and "Create an Analysis Server failover cluster", both of which are unchecked. At the bottom, there is a note "For more options, click Advanced." with an "Advanced" button. The bottom navigation buttons are "Help", "< Back", "Next >", and "Cancel".

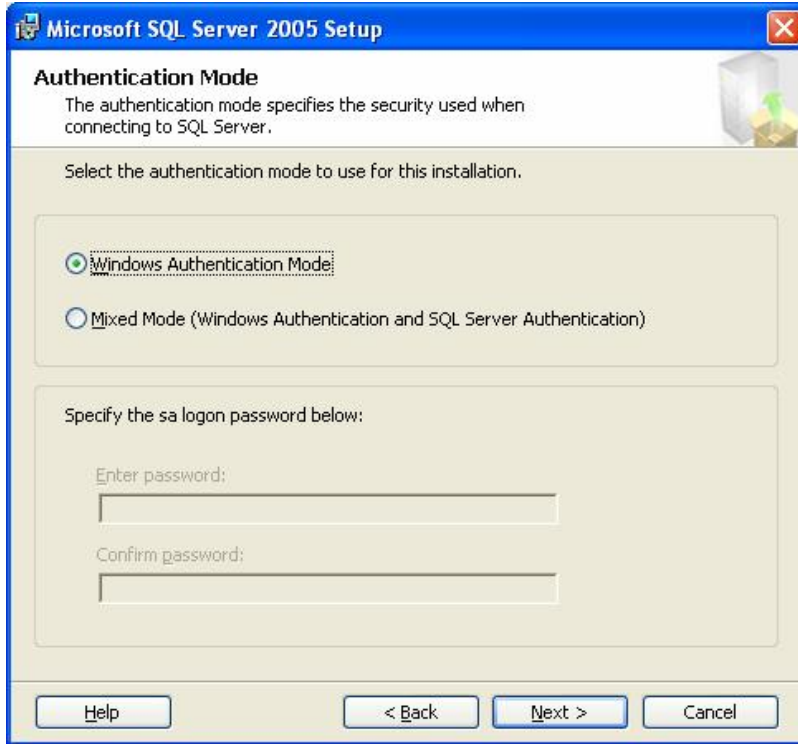
20. Click **Named instance** and type **INFINITY**. Click **Next**.



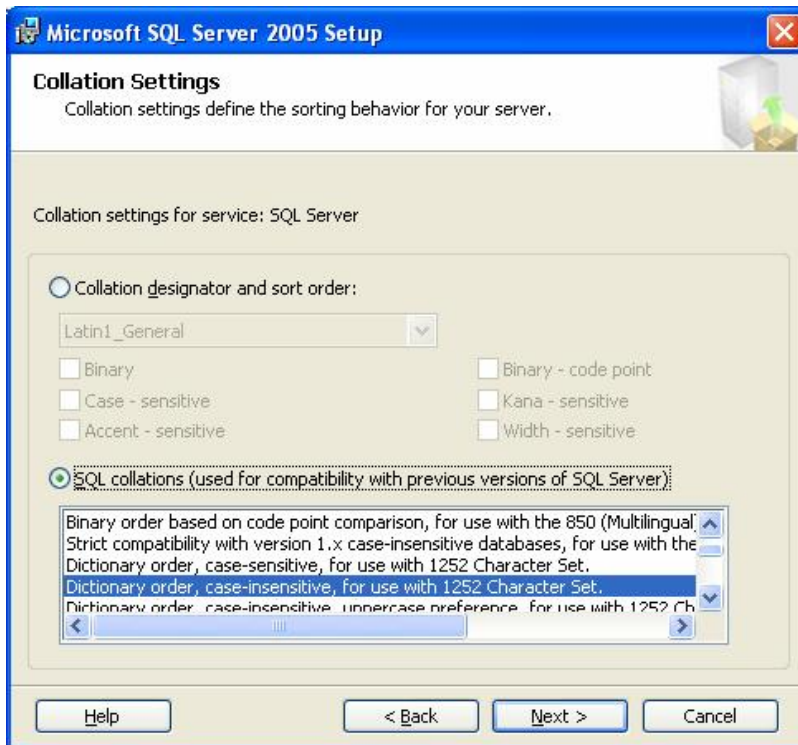
21. Change settings to match what is listed below. Click **Next**.



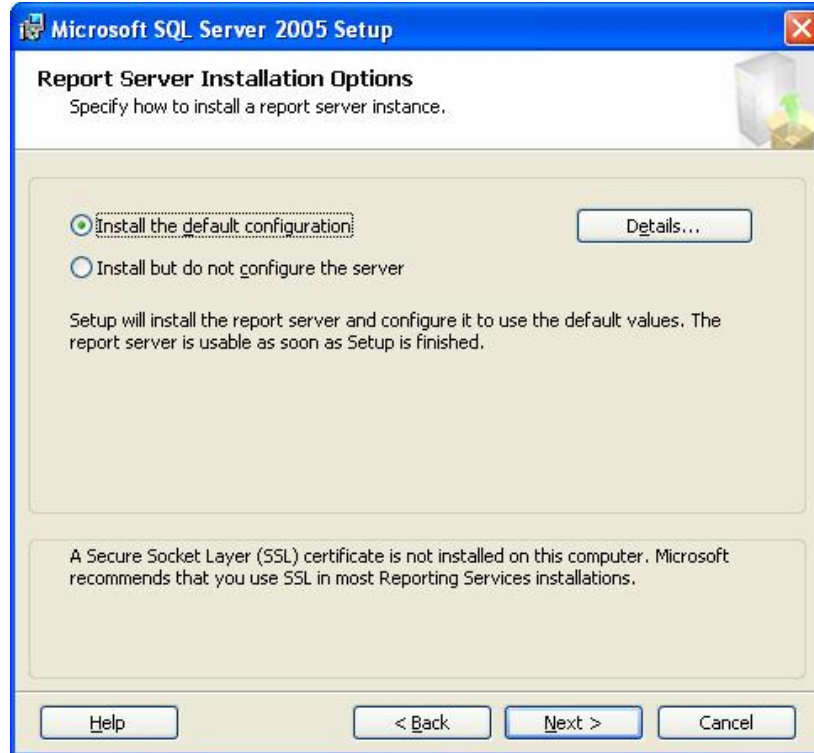
22. Choose **Windows Authentication Mode**. Click **Next**.



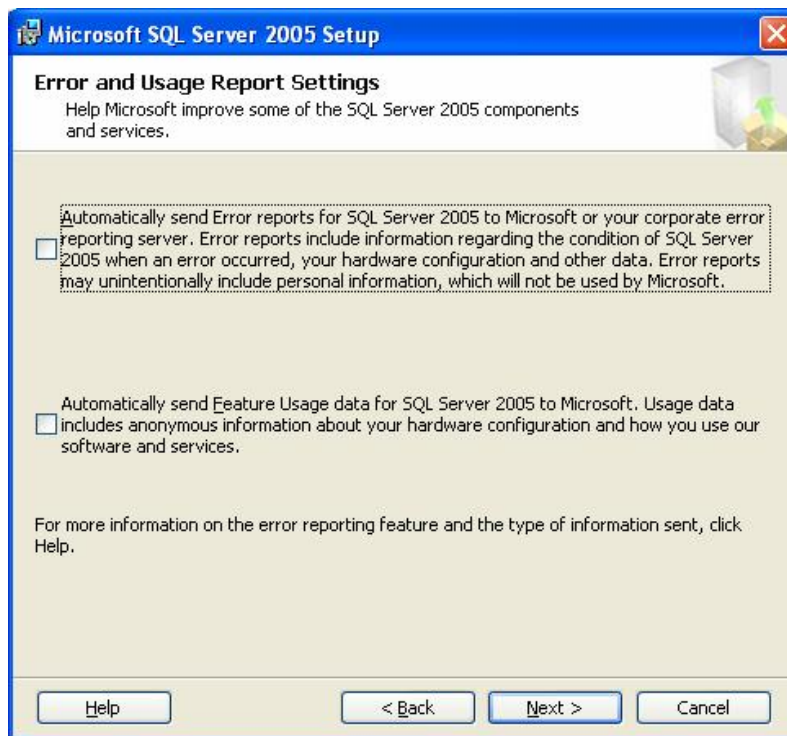
23. Choose **SQL collations**. Click **Next**.



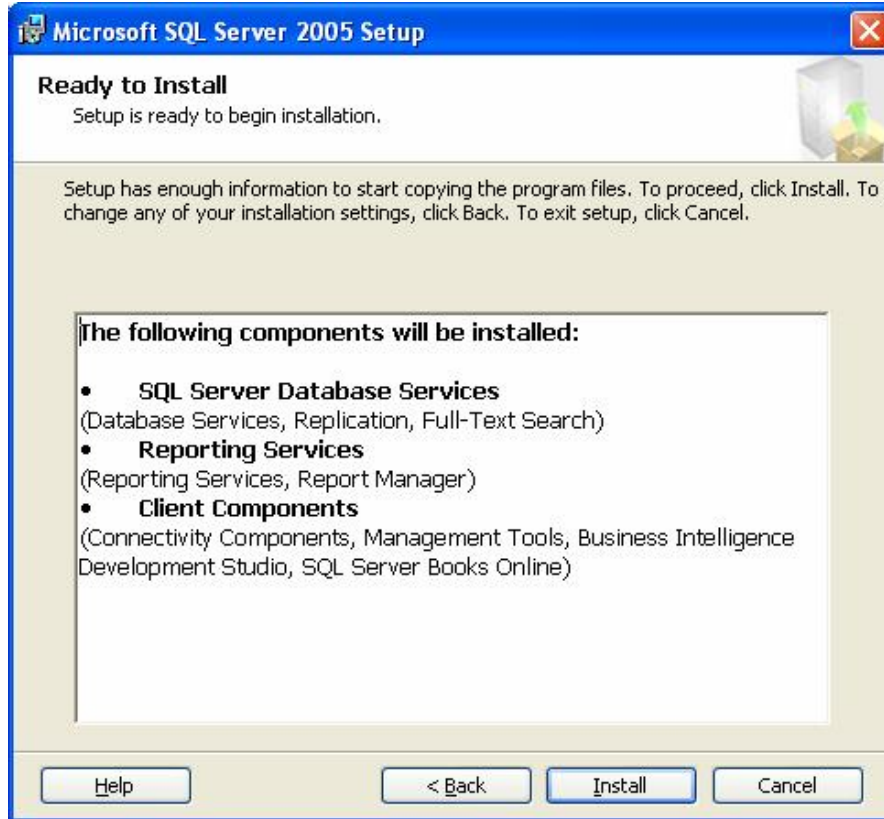
24. Choose **Install the default configuration**. Click **Next**.



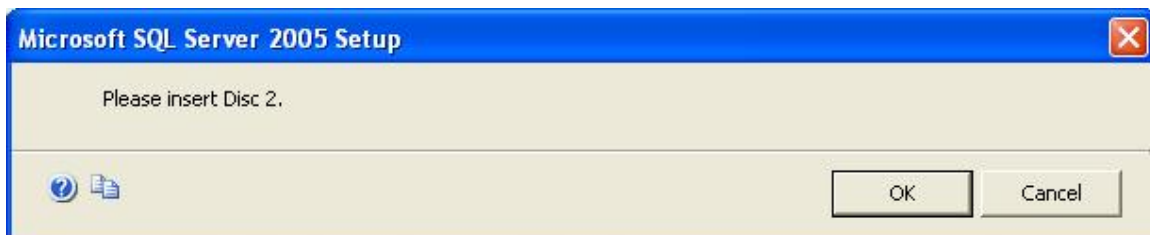
25. Click **Next**.



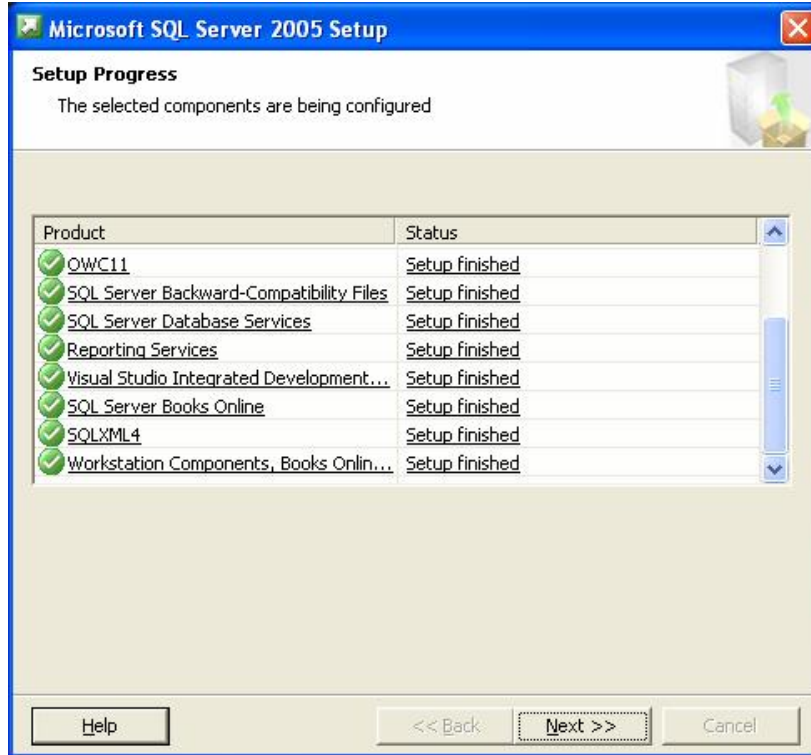
26. Click **Install**.



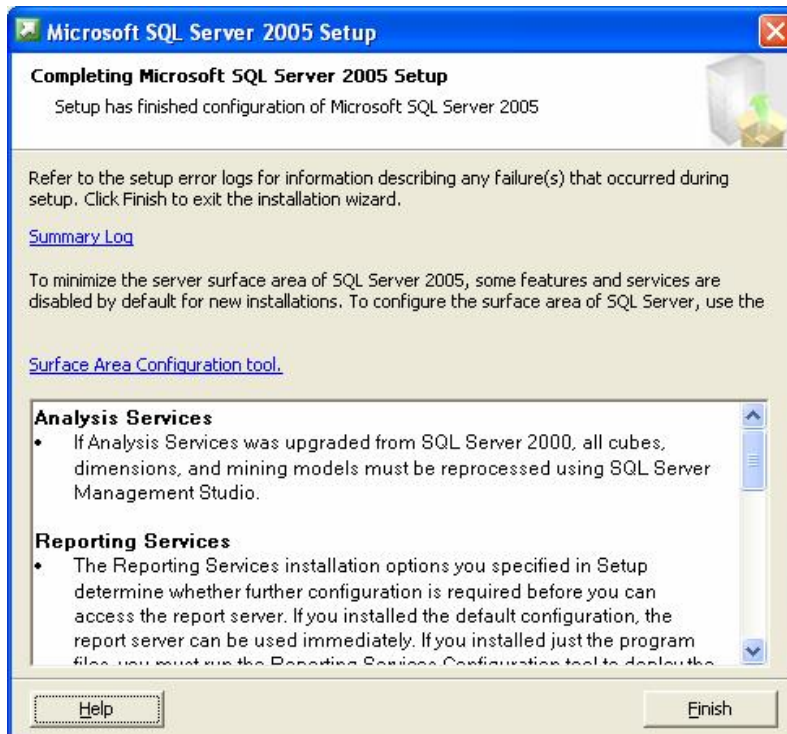
27. The install process will run for several minutes. Insert Disc 2 and click **OK** when prompted. If you are not prompted for Disc 2, do not be alarmed. Disc 2 is not required for all installations.



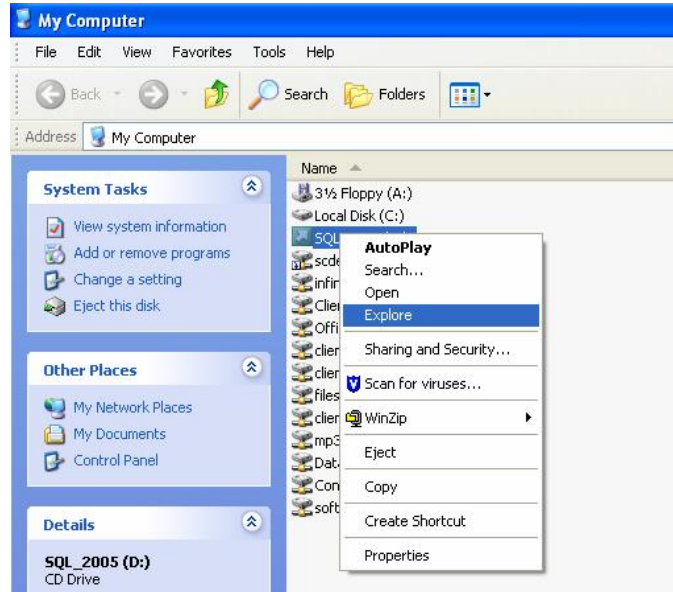
28. When the *Setup Process* is complete, click **Next**.



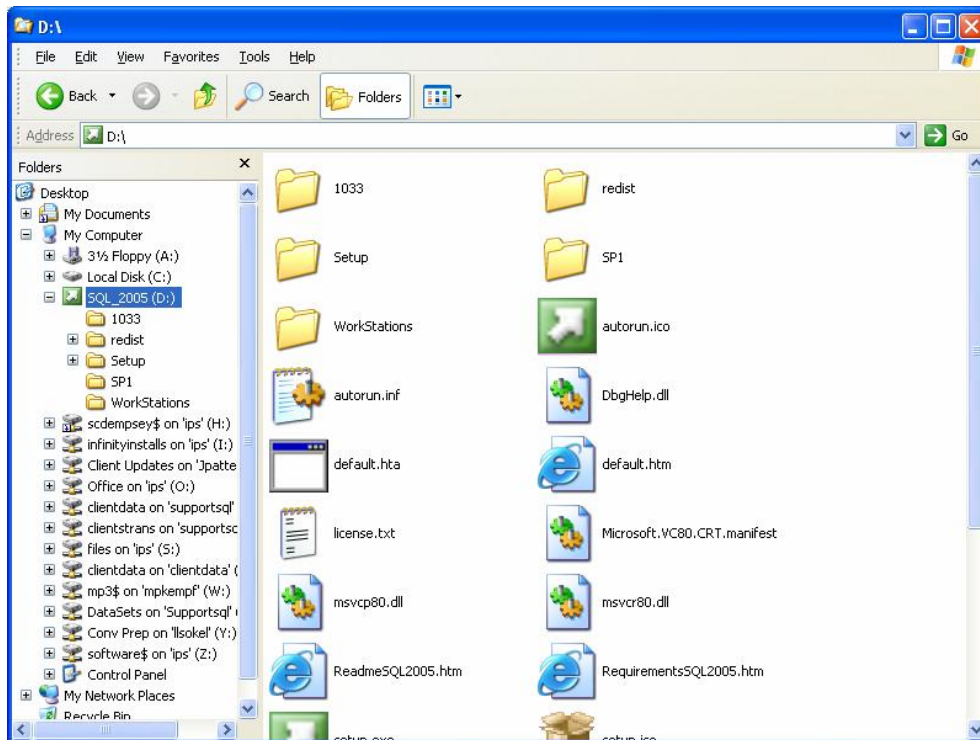
29. Click **Finish**.



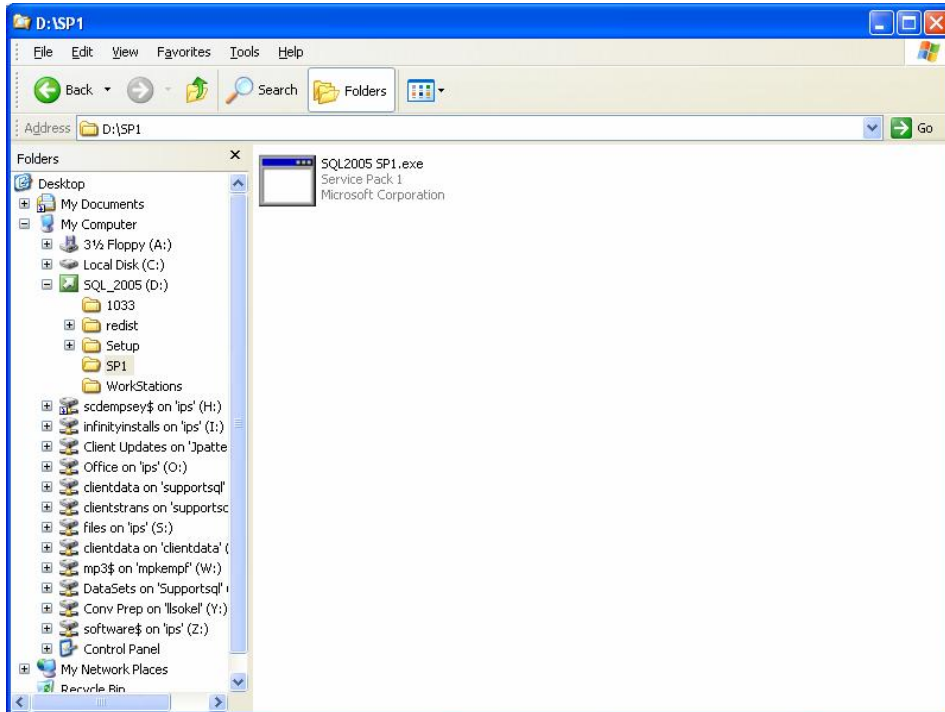
30. Restart the server.
31. Put Disc 1 back in the CD-ROM drive.
32. Double-click **My Computer** or click **Start | My Computer**.
33. Right-click on your CD-ROM Drive and choose **Explore**.



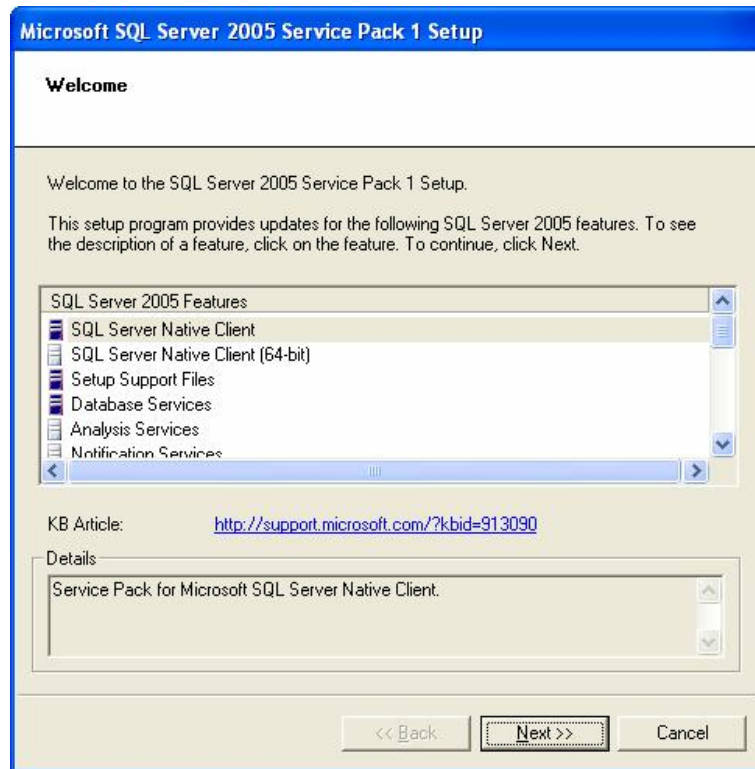
34. Double-click the **SP1** folder:



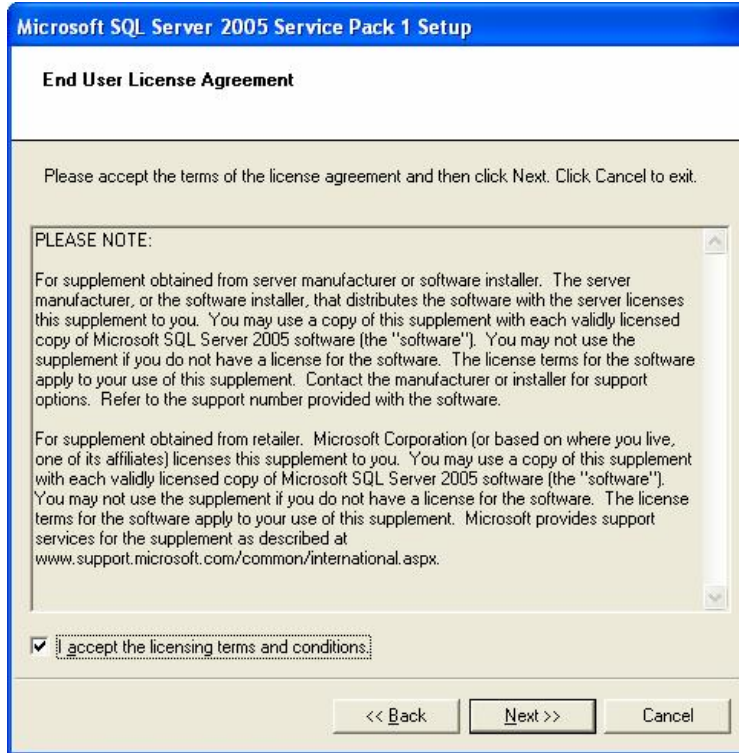
35. Double-click on **SQL2005 SP1.exe**.



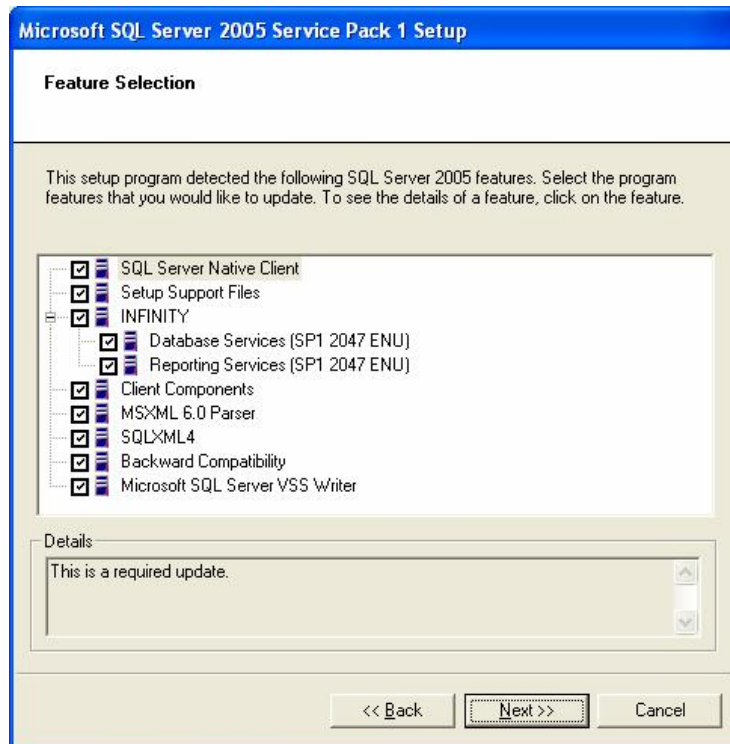
36. Click **Next**.



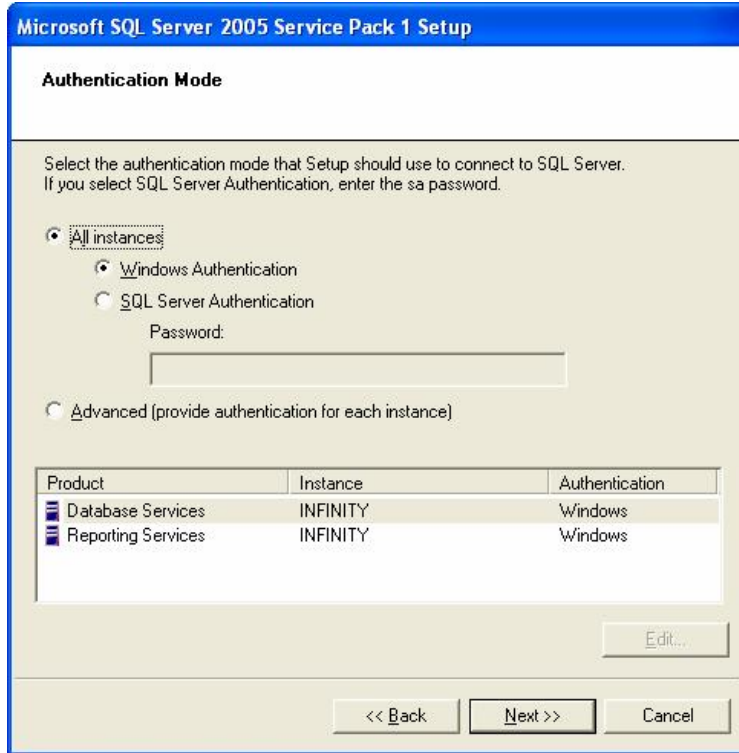
37. Click **I accept the licensing terms and conditions**. Click **Next**.



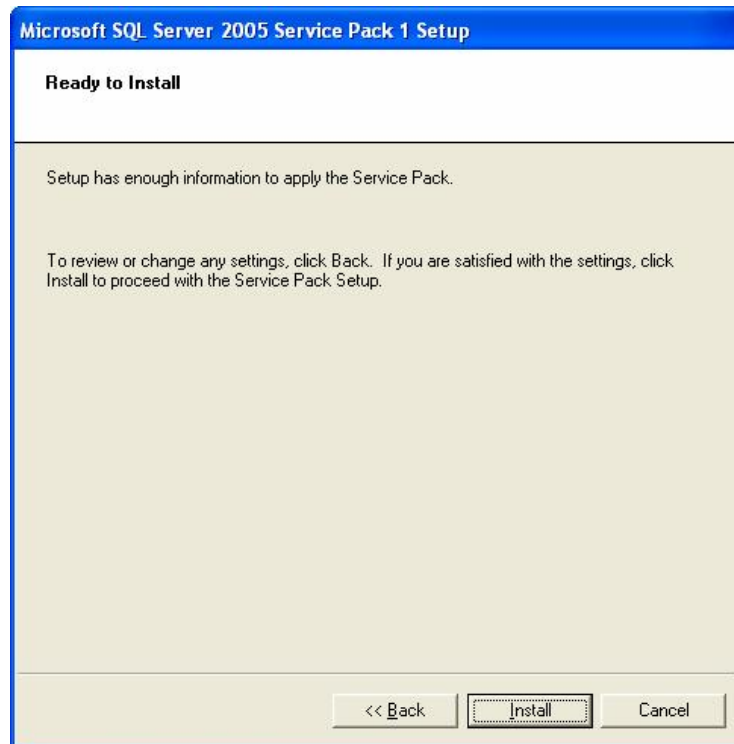
38. Click **Next**.



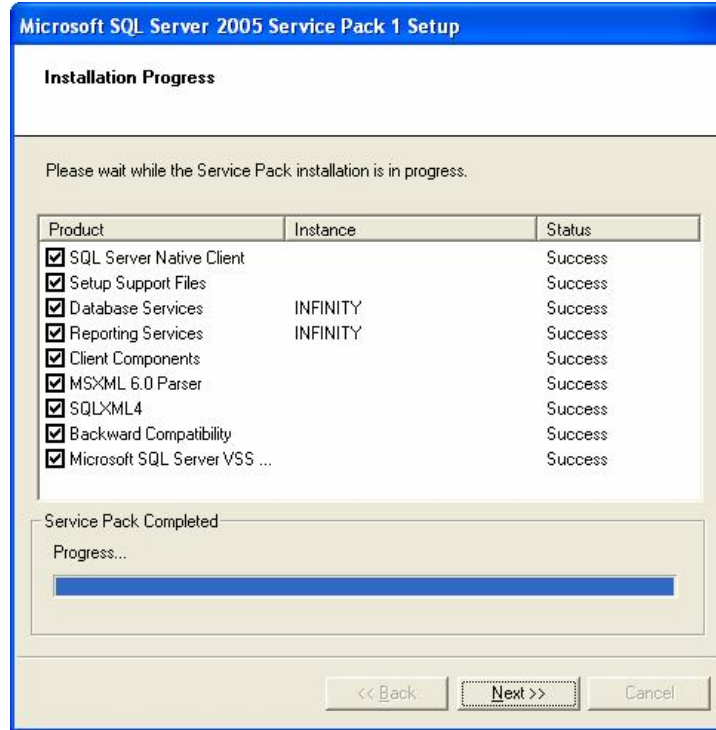
39. Choose **All Instances** and **Windows Authentication**. Click **Next**.



40. Click **Install**.

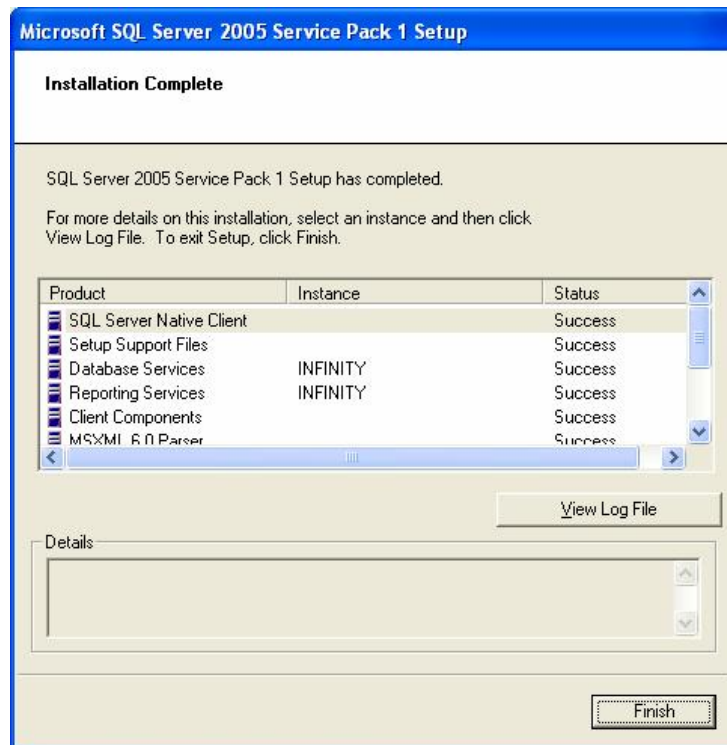


41. Click **Next**.

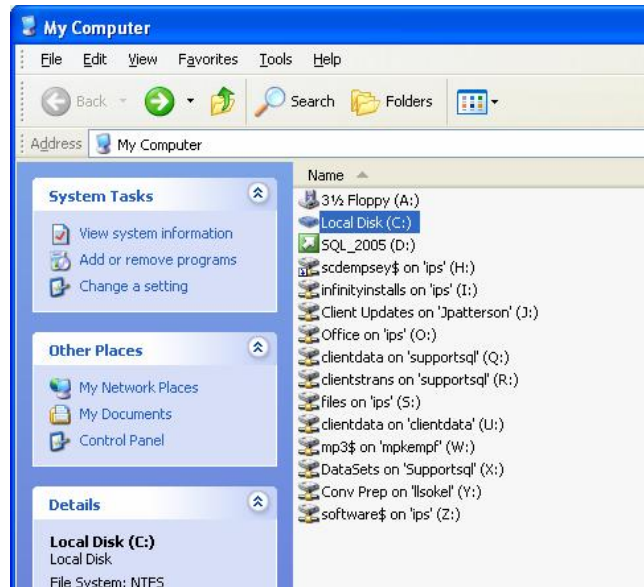


42. Click **Continue** on Locked File messages – locked files are normal.

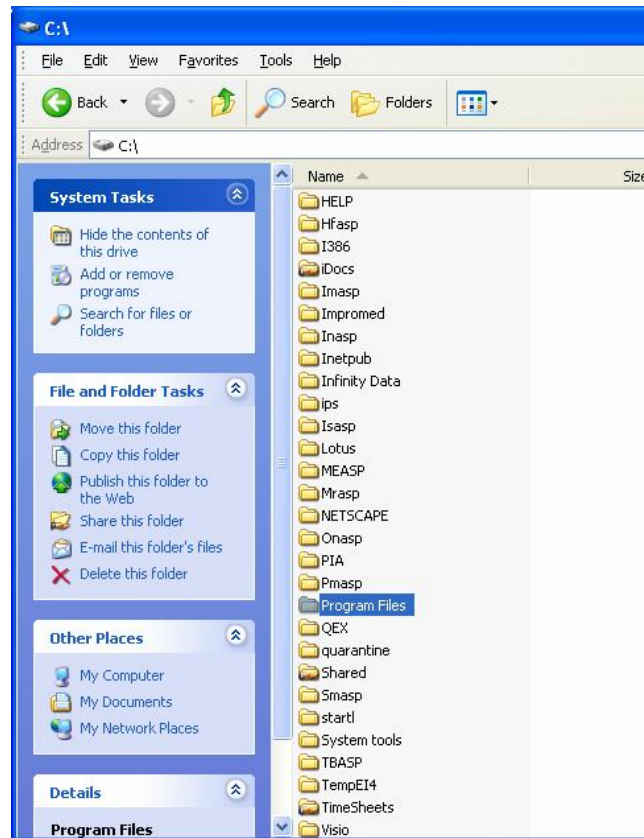
43. Click **Finish**.



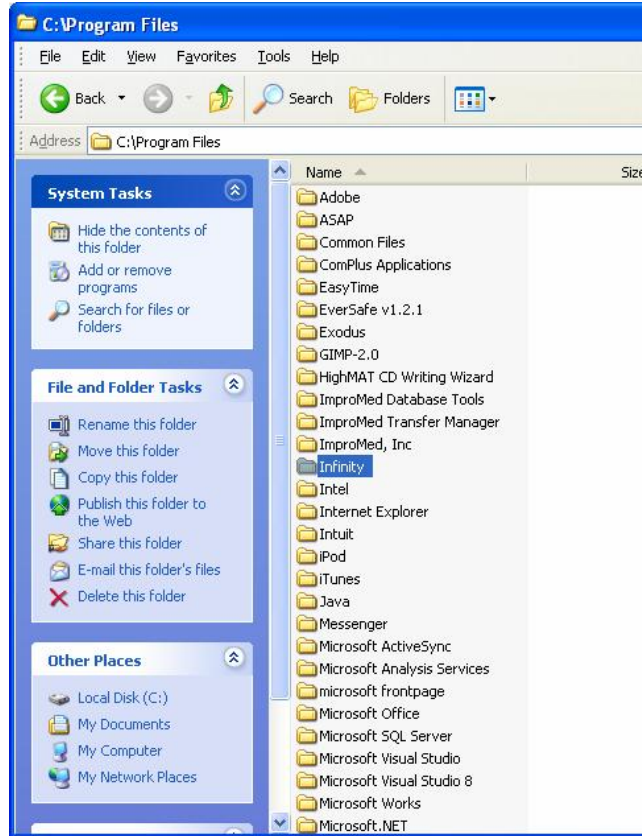
44. Double-click on **My Computer**, or click **Start | My Computer**.
45. Double-click on **Local Disc (C:)**.



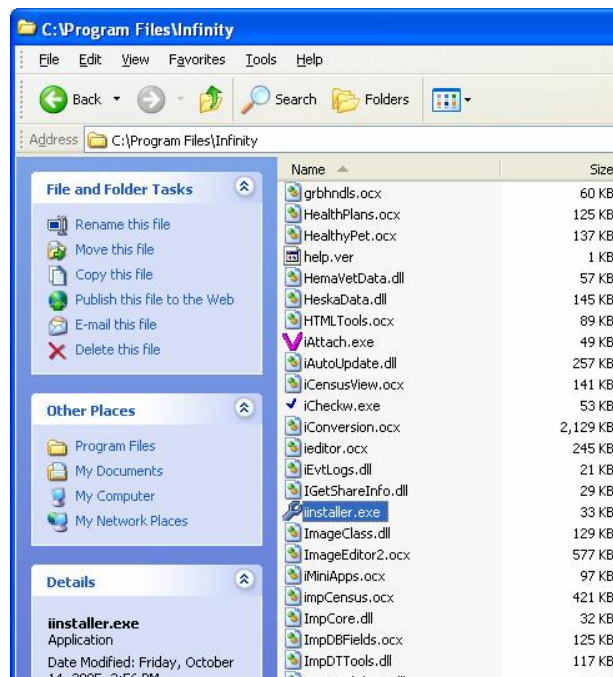
46. Double-click on **Program Files**.



47. Double-click on **Infinity**.



48. Double-click on **iinstaller.exe**.

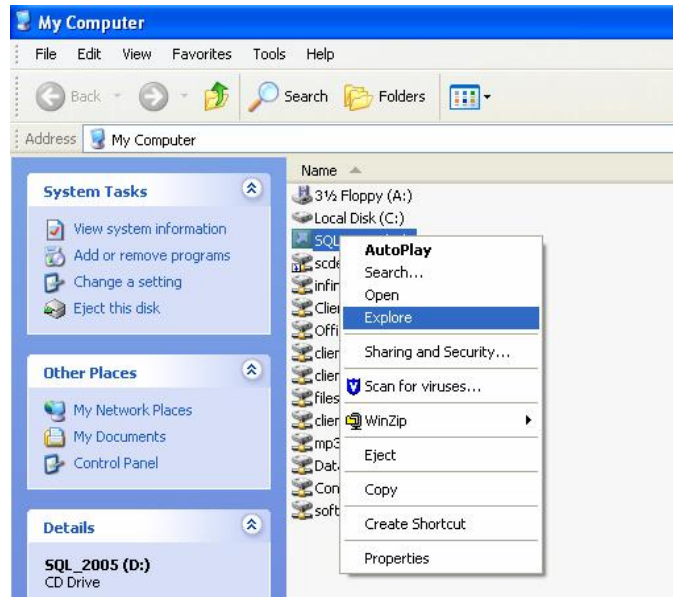


49. Type the name of your **Server**. Use the format *Server Name\Infinity*. Then click **OK**. Two examples are given below:

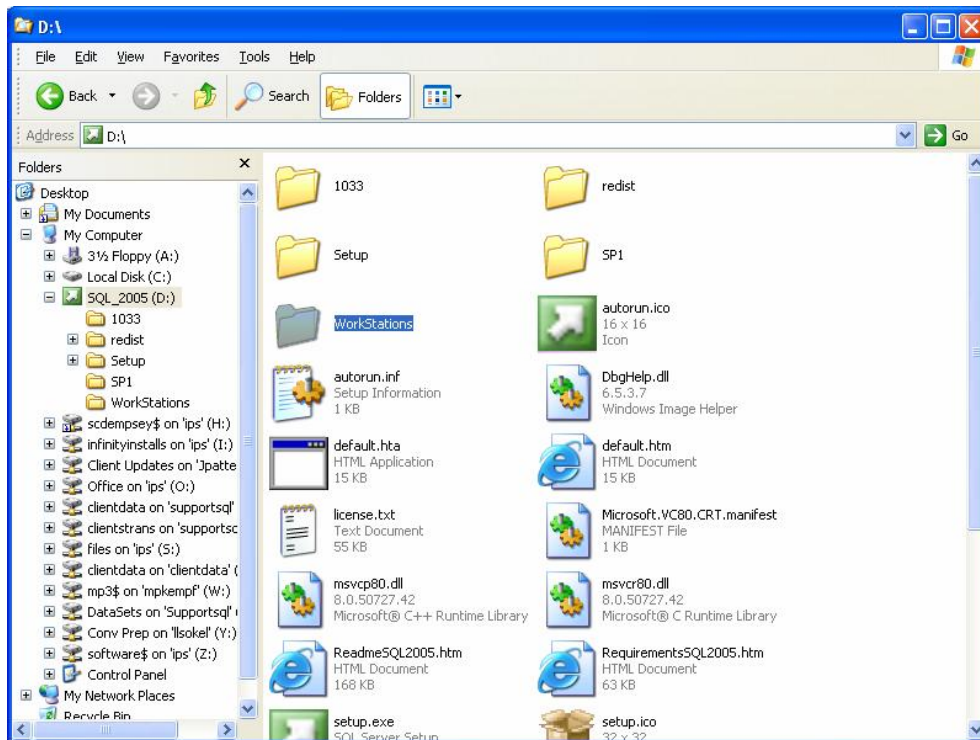


Installing Microsoft© SQL Server 2005 Workstation Only

1. Put Disc 1 in the CD-ROM drive.
2. Double-click on **My Computer** or click **Start | My Computer**.
3. Right-click on your CD-ROM drive and click **Explore**.



4. Double-click on the **Workstations** folder.



5. Double-click on the icons listed below and follow the install instructions:
- **mdac_28sp1.EXE** – This is only required on some Windows 2000 systems. If you are using Windows XP SP2 it should not be required.
 - **sql_native.msi** – This is the 2005 native driver. This is required on all workstations.
 - **SQLServer2005_BC.msi** – This is required on all workstations.
 - **WindowsInstaller_31_redist.exe** – This is required on all workstations.

